



## TRI-BUILT® EPDM COVER STRIP

### DESCRIPTION

TRI-BUILT® EPDM Cover Strip consists of a semi-cured EPDM membrane that has been laminated to a 25 mil EPDM based pressure sensitive tape adhesive.

### BASIC USE

TRI-BUILT® EPDM Cover Strips are designed to cover, protect, and seal mechanical fastening bars, membrane fasteners, core sample repair patches, membrane repairs, and seam overlays in all EPDM roofing systems.

### FEATURES & BENEFITS

- Resistant to UV light, high heat and moisture
- Long-term durability
- Excellent adhesion to multiple substrates
- Suitable for a wide variety of sealing applications
- No torch or liquid adhesives
- Improved safety
- Fast installation
- Saves time and labor
- Waterproof detail
- Suitable for roofing and waterproofing applications

### STORAGE & SHELF LIFE

Store material in original unopened packaging at temperatures between 40°F-110°F. Shelf life is 12 months when stored as recommended.

### SAFETY

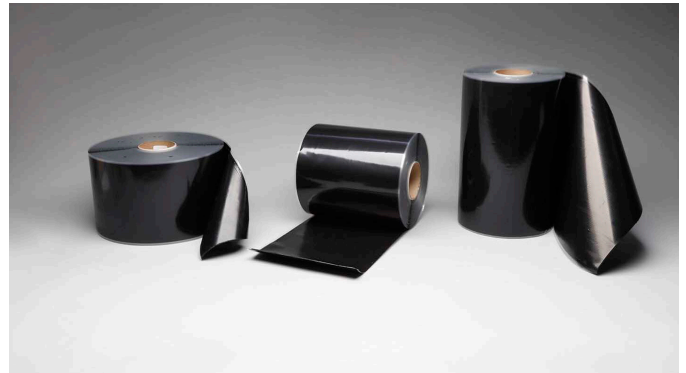
Prior to working with this or any product consult product label and Safety Data Sheet (SDS) for necessary health and safety precautions.

### LIMITATIONS

- Not for use on PVC roof membranes.
- Do not use for detail flashing applications.
- Talc, dust, oil, ice, snow, or wet conditions inhibit good adhesion. Clean and dry surfaces are necessary for proper installation of this product.

### COLOR

Black



### PACKAGING & COVERAGE

TRI-BUILT® EPDM Cover Strip is available in the following sizes:

WIDTH	LENGTH	ROLLS/CASE
5"	100'	2
6"	100'	2
9"	50'	1
12"	50'	1

### TECHNICAL DATA

Typical Physical Properties and Characteristics		
	Typical Values	Test Method
Base Polymer (Cover & Tape)	EPDM	FTIR
Color (Cover & Tape)	Black	Visual
Tensile Strength	900 psi min.	ASTM D 412 Die C
Elongation	300%	ASTM D 412
Tear Resistance	125lbs./in	ASTM D 624
Ozone Resistance	No Cracking	ASTM D 4419
Peel Strength	10 pli @ 70°F	ASTM D 413
Shear Strength	20 psi @ 70°F	ASTM D 816
Brittleness Temperature	-50°F	ASTM D 2137

NOTE: The foregoing information is published as general information only. The listed properties and performance characteristics are typical values and are not to be interpreted as manufacturing specifications.

## SURFACE PREPARATION

All work surfaces should be clean, dry, and free of dirt, dust, debris, oils, un-adhered coatings, deteriorated membrane and other contaminants that may result in a surface that is not sound or is uneven. If necessary, clean the surface to receive cover with an approved EPDM membrane cleaner.

## APPLICATION

1. Clean entire surface where TRI-BUILT® EPDM Cover Strip will be applied.
2. Apply EPDM primer to entire surface to be covered using the supplied scrub pad. NOTE: Use caution when installing at temperatures below 40°F (5°C) to prevent blushing of EPDM primer (formation of condensation on surface of primer).
3. Allow the primer to dry to the touch (no material transfer, typically less than 20 minutes). Dry time will vary depending on ambient temperature and humidity.
4. Once the primer is dry immediately install TRI-BUILT® EPDM Cover Strip.
5. Position Cover Strip over primed area and remove release liner at 45 degree angle while pressing down cover strip by hand.
6. Roll the Cover Strip with a 2" (5.08cm) wide silicone roller.
7. Seal edges of cover detail with edge sealant.

